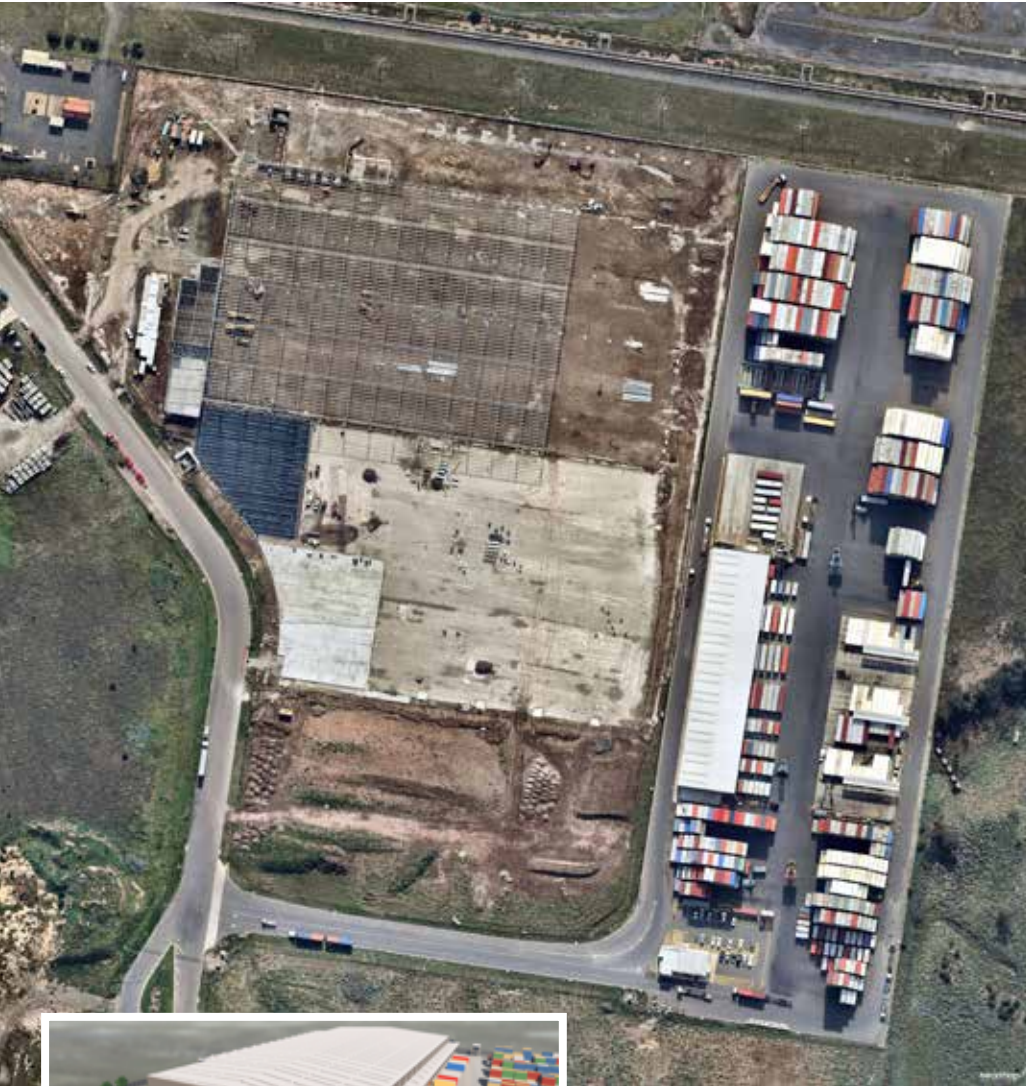


ACFS Port Logistics - 'Salta Properties' Altona Inland Port Container Park



Strategically located in the western suburbs of Melbourne at Salta Properties Nexus Industrial Altona, **ACFS Port Logistics** takes another step towards achieving its mission on retaining its status as Australia's leading wharf logistics firm offering a full suite of supply chain services while introducing its "Go-West" vision to life in Melbourne.

After a decade of carefully architecting a presence on each major port in Australia and offering customers a distinguished service, in 2015 Managing Director & CEO Arthur Tzaneros, commenced cultivating the second phase of growth by driving what is referred to as the "ACFS Go-West" strategy.

The vision was to replicate the ACFS "On Port" presence "Off Port" and become Australia's leading supply chain infrastructure firm. The key ingredient was to ensure that all the ACFS facilities consist of connectivity via rail and High Productivity Vehicles (HPV's). Adjacent to the Melbourne – Geelong Freight Rail Corridor with access to the West Gate Freeway and Western Ring Road for HPV's from Port of Melbourne, ACFS are proud to announce

the launch of their new state of the art facility located at the '**Salta Properties' Altona Inland Port Container Park.**

Salta Properties Managing Director, Sam Tarascio said, with Australia's largest privately-owned container logistics company ACFS Port Logistics joining anchor tenant MAERSK Shipping Line, it reinforces the demand for the Port Rail Shuttle Network at Nexus Industrial Altona. 60,000 sqm of land adjacent to the train line has been set aside for the highly anticipated proposed Port Rail Shuttle Network.

The highly anticipated ACFS Altona Site in Melbourne is due for completion on 30 September 2020. This mammoth project solidifies the strong footprint that ACFS have in Melbourne Metro. Boasting 25,000 square metres of warehouse space with an extended hardstand designed to store over 4,000 TEU. The new site will be offering services such as warehousing, both 3PL and e-Commerce, and container transport services. Given that we are located within minutes of surrounding distribution centres, we will be able to provide timely and uninterrupted final mile delivery services.

The facility is part of the proposed Port Rail Shuttle Network, designed to significantly reduce truck trips into the port by 3,500 per day of the 5,500 trucks that visit the port on a daily basis now.

"We welcome ACFS Port Logistics' support in the Port Rail Shuttle Network" said Mr Tarascio.

The strategic location of this site allows ACFS to adjoin with the Maersk Empty depot, Port Rail link, and SCT facilities and Services. As illustrated above, the development by Salta Properties is progressing fast and ACFS are excited to bring this solution to market.

