

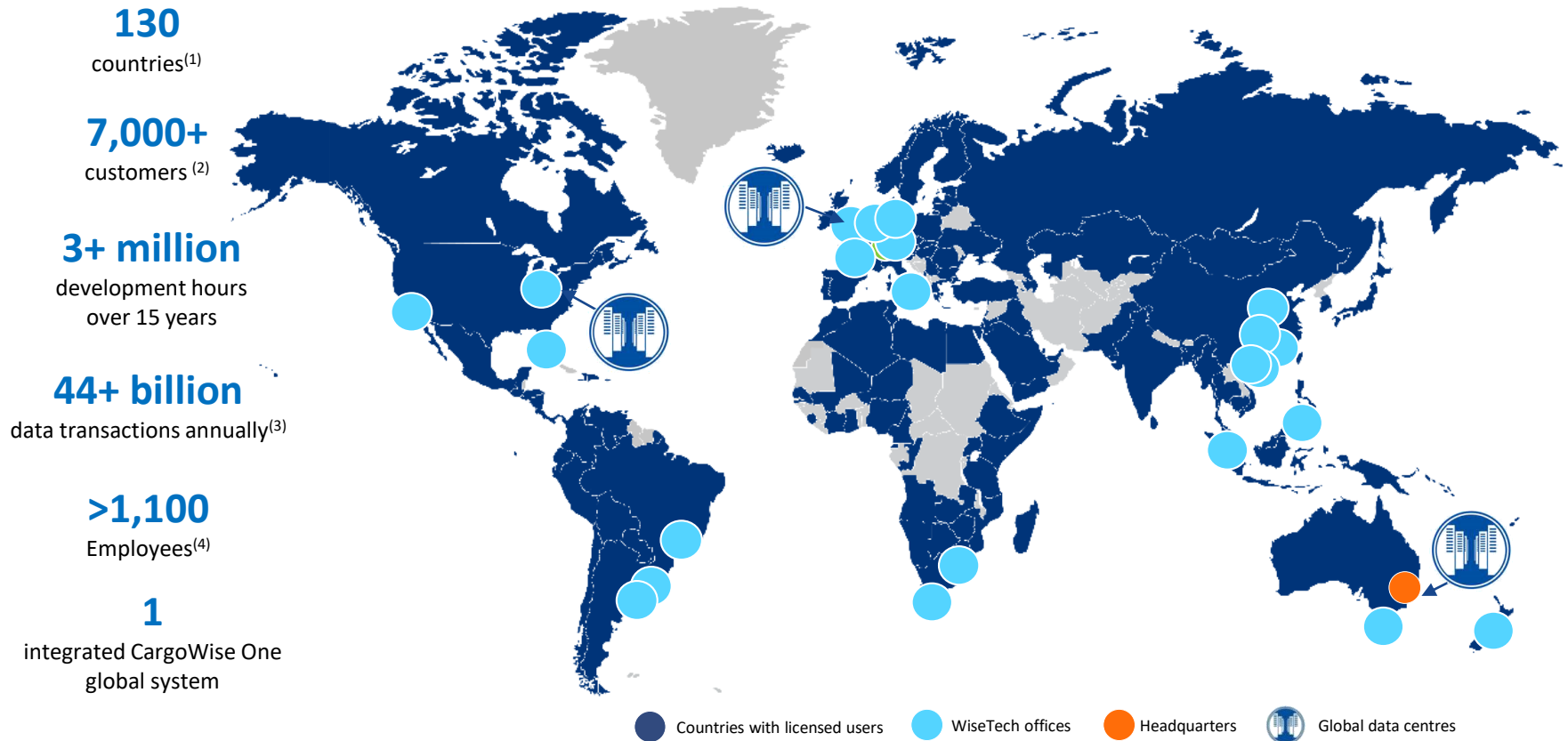
# The future of Customs Compliance Technologies and A Vision of Single Window for Trade

WiseTech Global  
**Founder & CEO, Richard White**



# WHO ARE WE

## A leading provider of software to the logistics industry globally



(1) Countries in which WiseTech software is licensed for use.

(2) Includes customers on the CargoWise One application suite and legacy platforms of acquired businesses; legacy customers may be counted with reference to installed sites.

(3) Data transactions for FY17, transactions measured at 30 June annually.

(4) Includes acquisitions announced to 23 April 2018

# Global logistics industry and the competitive environment

*What's ahead in 2018 and beyond*

## **ADVANCING TECHNOLOGY**

Integration  
Mobility  
Increasing Automation  
Machine Learning  
Low skill labour targeted for replacement  
Offshoring first to go

## **COMMERCIAL IMPERATIVES**

Massive e-Commerce volume growth  
Demand for faster Delivery  
Priced pressure  
Capital constraints  
Low growth in Bulk Freight markets

## **LOGISTICS BLURING**

Blurring of 1PL/2PL/3PL  
Deep systems capability and integration driving value  
Legacy logistics platforms struggling under high volume low value workloads

## **REGULATORY PRESSURE**

Increasing regulation & complexity  
Small parcel volumes creating new and complex border challenges  
Onerous penalties  
Constant ongoing change (Single window, Trusted Trader, Tariffs/FTAs, Trade Wars, Political volatility)



# Industry and competitive environment

*What's ahead in 2018-19 and beyond*

## Logistics in rapid evolution

- Consolidation continues, for 3PL and 2PL providers scale is key
- Increasing demand for integrated ecosystems to improve productivity and competitiveness
- Growing demand, few new commercial provider entrants of scale
- Borders blurring across the logistics industry
- 3PL e-commerce growth, growing 15%+ in key regions driven by consumer spending and increased cross-border purchasing requiring new solutions
- High growth in 3PL logistics, upcycle = stronger inertia around switching platforms

## Governments

- Constant ongoing change centred around single window, e-commerce, border control/visibility, political change such as Brexit/political volatility
- Increasing compliance fines to address risks, increasing regulatory burden
- Governments are starting to focus on the massive volume of e-commerce cross-border transactions
- Digitisation is essential but implementation slow (Paper or ePaper documents are now a significant problem)

## E-commerce growth driver

- E-commerce volumes are simultaneously pressuring and expanding logistics businesses and conventional shippers/retail
- E-commerce dismantling offline bricks and mortar, now impacting online retailers and potentially dis-intermediating wholesalers while both using, and competing with Logistics providers
- E-commerce giants becoming Logistics providers for their own operations
- E-commerce players expanding in significant ways into new markets

### AUSTRALIAN E-COMMERCE AND BULK FREIGHT INDICATE WORLD TRENDS

The number of low value consignments imported into Australia was 38.7 million in 2016-17, an increase of 22 per cent on 2015-16. In contrast, over the same period imports of high value consignments has only grown by 3 per cent to 3.7 million.

The number of low value consignments entering Australia is expected to increase further by 31 per cent over the next four years, compared with only 10 per cent growth expected in high value consignments.

# The competing needs of Traders, Shoppers, Platforms and Governments

*Tensions abound, parties have different goals but a clearer solution in sight*



## Needs/Problem

Poor Border Compliance

Embargoes / Dual Use / Denied Parties etc

Rare but massive compliance fines

Demands for lower cost / faster delivery of ecommerce

Risk-free, cross-border execution

Massive eCommerce Volumes



## Solution

Fines, penalties

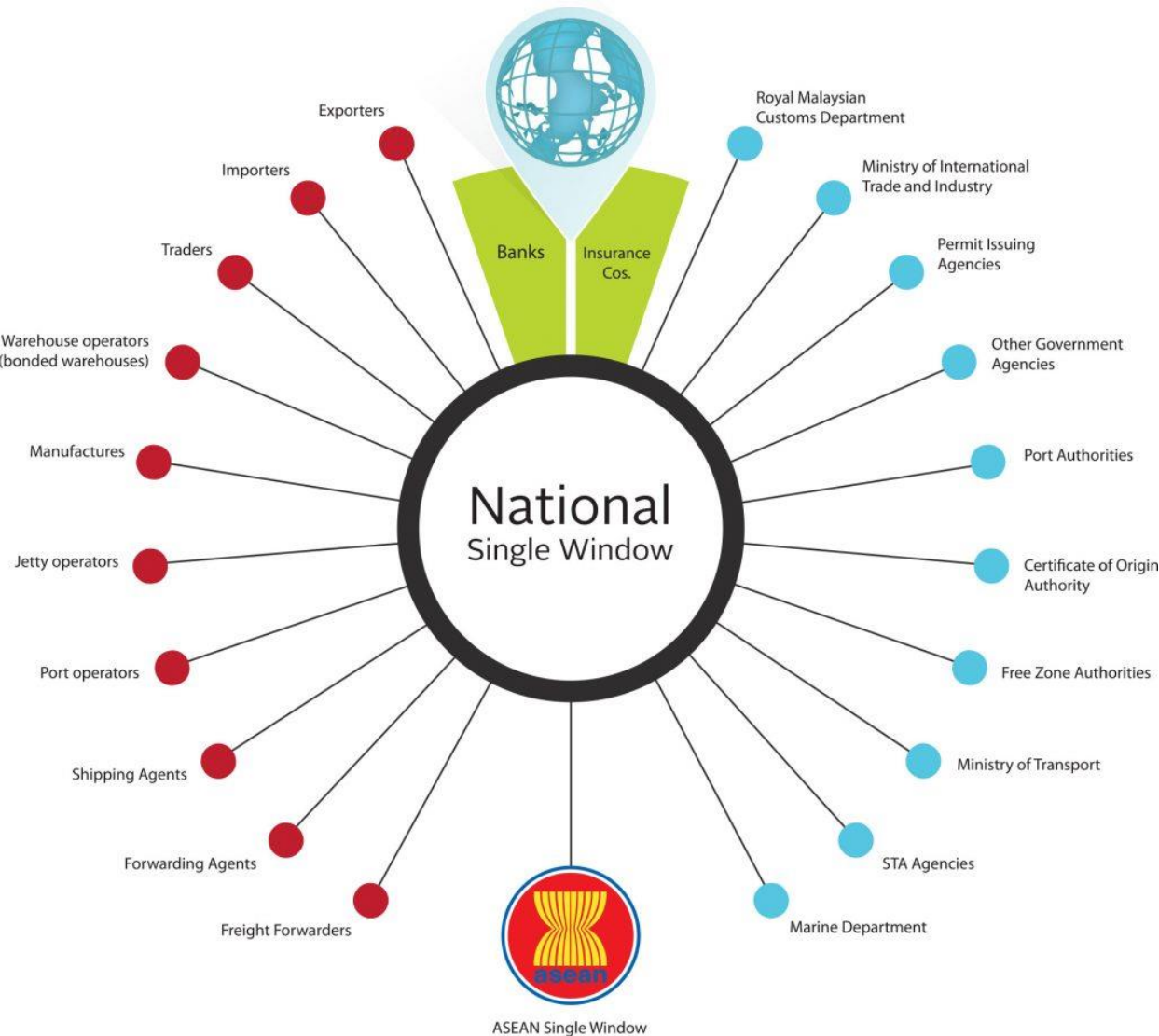
Single Window to Government  
Trusted Trader programs/Education

Cleansed + verified global data sets  
(computer) Guided decision-making  
Advanced technical skills supported by Data driven systems / machine learning / Automation

# What is a Single Window?

A facility that allows parties involved in trade and transport to lodge standardized information and documents with a single entry point to fulfil all import, export, and transit-related regulatory requirements across all relevant government agencies.

# What is a Single Window?



More than 70 global economies have developed and implemented Single Window systems (Source: DFAT)

# Security and Risk drive Single Window

Single Window has taken on increased importance in the new security environment and emphasis on advanced information and risk analysis

UNITED NATIONS



# Advanced Technology/Data - the only way forward



## Customs Expert

- Deep Knowledge
- Supported by Systems

## Computer Aids

- Machine Learning
- Guided decision making

## Transaction Data

- Product Information
- Supporting Information

## Technical Library

- Harmonised System
- Regulatory Data

# The Intersection of Machine Learning/Automation and People

*What's ahead in 2018 and beyond*

## LOW SKILLED LABOUR

At risk in the medium term  
Offshoring to go  
The only safety is education up the value chain

## RISE OF THE MACHINES

Machines will replace repetitive, low complexity work  
  
Machines will assist with high complexity work

## HIGH VALUE EMPLOYMENT

Creative Occupations  
Highly Skilled Occupations  
People Skills  
Customer Relationship / Sales skills

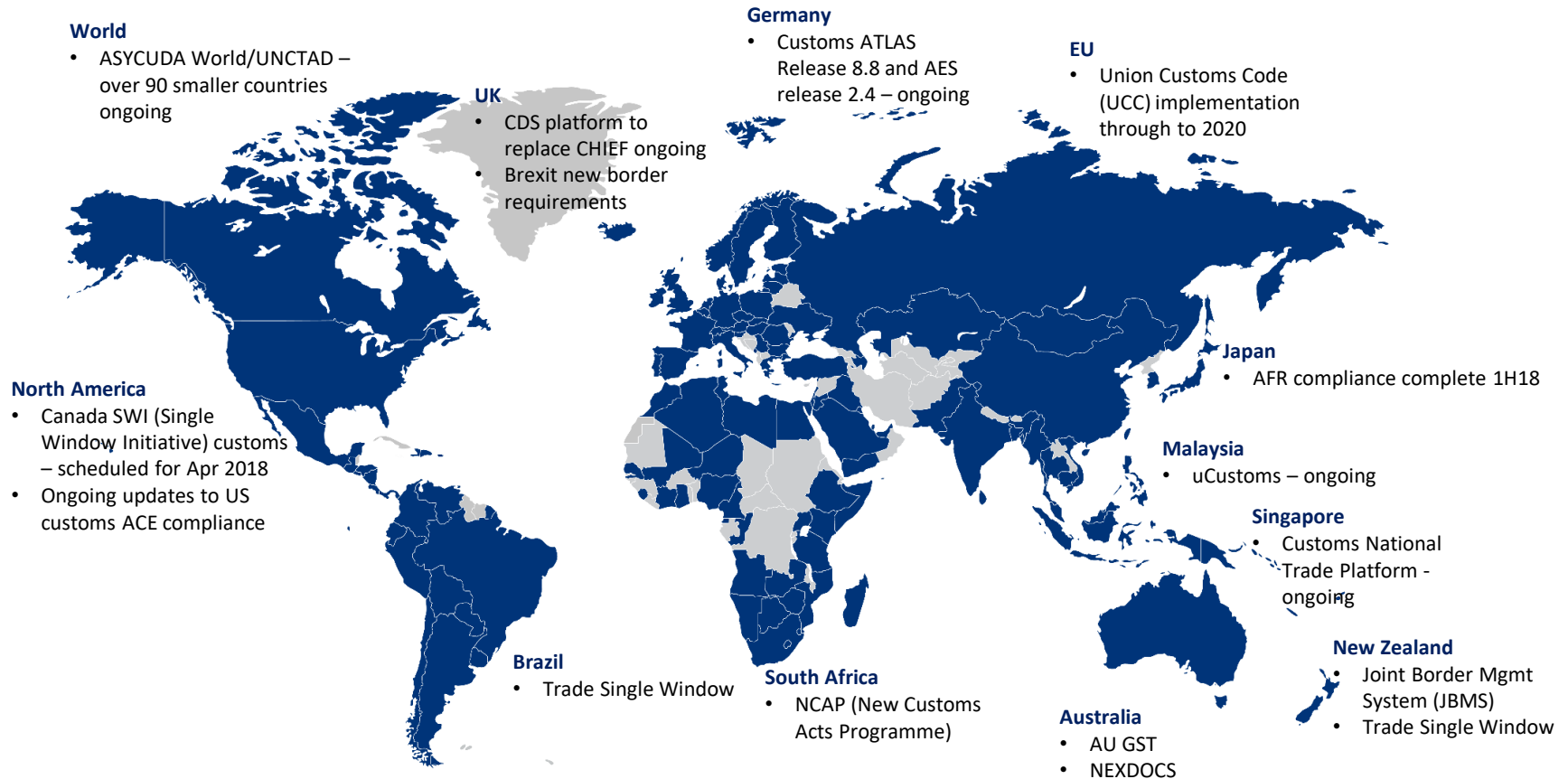
## TRANSITION TO THE FUTURE

3-5 years – Offshoring starts to return home  
  
5-10 years: Onshore – jobs for low skill labor to become scarce  
  
15 Years +  
Only high skilled, creative, IT, relational job remain



# Single Window is Global and Ongoing - regulatory changes progresses fast

*We invest our regulatory experts and development teams in ensuring CW1 fully compliant globally*



# WiseTech is building a global border complain engine

*Small targeted acquisitions in key regions provide safer, faster, stronger entry to new markets*

**We buy into market positions that would take years to build, integrate swiftly, and drive value across platform**

## Why buy, not build?

*Seamless entry into new markets with:*

- Industry experts
- Local leadership
- Quality customer base
- Local infrastructure and offices

## *Risk reduction*

- Known entry cost
- Earnouts help retain mgmt
- Addresses war for talent

## *Accelerates expansion*

- Move rapidly with certainty
- Targeting manufactured trade flows – high growth



## Rapid expansion since January 2017:

**11** customs focused acquisitions

Delivering strong positions in:

- Belgium
- Brazil
- France
- Germany
- Ireland (2)
- Italy
- Taiwan, China
- 16 countries across Latin America

Added ~**250** talented industry experts and developers

Integrate product immediately – embed new product over time, utilising Universal Customs Engine

Integration scalable

Upfront cost of only ~**\$57m** plus earnouts in future years

# Adjacencies feed into our global logistics ecosystems

*Targeting key plug-ins to our global development or multi-regional adjacencies that can scale*

We are **accelerating convergence of technologies** by adding targeted acquisition of key adjacencies to our innovation pipeline to build valuable ecosystems and global product sets.

1H18 acquisitions focus on expanding TAM in ocean, air, land transport, warehousing and data provision

We look for adjacencies that we can scale from domestic multi-region to global product capability, and either:

1. Provide a core element for key ecosystem development; or
2. Expand our next generation development of existing CW1 modules; or
3. Feed into global data set for machine learning and automation

Since 2017, we've added **~200** talented industry experts and developers

Integrate or embed is bespoke to the adjacency

Upfront cost of **~\$72m** plus earnouts in future years



# Innovation investment

*Significant pipeline of longer-term innovations across existing verticals and new adjacencies*

**~600**

product  
upgrades and  
enhancements  
annually

**37%**

of revenue  
invested  
in 1H18

**50%**

of employees  
focus on  
innovation and  
product  
development

**>670,000**

unit tests  
executed every 45  
mins

**>\$200m**

invested  
FY14-FY18F

Major development focus on:

- Productivity
- Global data sets
- Machine learning
- Natural language processing
- Guided decision making
- Global automations
- HVLV logistics (e-tail)
- Regulatory environment changes

Over 3,000 product upgrades and enhancements added to the global platform over last 5 years

Our FY18 commitment: >\$65m in innovation and development

## *Work faster, harder, smarter*

### PAVE

- Productivity Acceleration Visualisation Engine

### GLOW

- 'Build once' architecture and 'coding without coders'

### Universal Customs Engine

- Accelerating complex customs localisations

## *Reduce cost, time, error, risk*

### WiseRates

- Global data sets
- Real-time access
- Immediate booking

### Global Tracking

- Global air/ocean schedules, container and air waybill tracking

### BorderWise

- Risk reduction
- Due diligence
- Cost efficiency

## *Supply chain behavioural change*

### GEOCODE

- Global address cleansing
- Geocoding
- Master data de-duplication

### Global data sets

- Multi-modal rates, schedules, bookings
- Compliance data
- 3PL supply chain

### Machine learning

- Process automation
- Guided decision making
- Natural language processing

# Innovation pipeline – BorderWise

*Global data set + machine learning = powerful border compliance engine, market leading*

**WiseTech border compliance engine**

**+ Custom-built global data set**

**+ Adjacent acquisitions x 2**

**+ WiseTech machine learning and natural language processing (NLP)**

**Prototype testing to rapid deployment <6 months**

**Immediate customer base from ediTariff, Digerati and TradeFox**

**Trial with select large global 3PLs and non-logistics data providers**

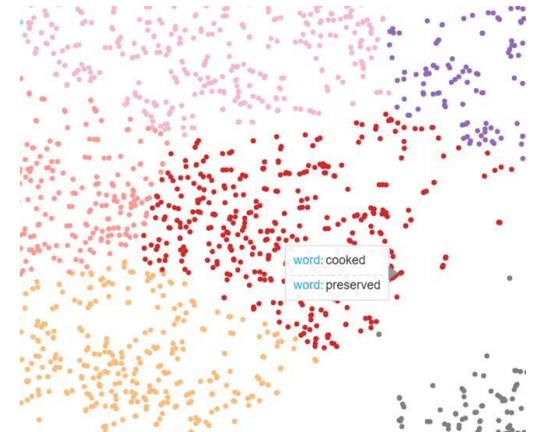
**FY18 rollout to Australia, EU, NZ, Singapore, South Africa and the UK**

## What's in the box:

- Next generation of compliance management: comprehensive, integrated suite of legal books, technical documents, tariff-classification tools, and reference information.
- Provides the full breadth of customs publications from the World Customs Organization Harmonized System Explanatory Notes and the principles of valuation, to ratified treaties and local legislation.
- Global data set with real-time updates and alerts on legislation, publications and notices from regulatory bodies. Improves productivity, reduces compliance risk, fines, penalties and costs and can help customs and border protection agencies mitigate safety and security risks arising from the movement of goods across their borders.

## Development:

- Over 60m past classifications and growing exponentially daily.
- Extensive global and local data set drive our machine learning and natural language processing techniques.
- NLP will allow levels of automated classification through the use of guided decision trees.
- Available standalone and integrated with CargoWise One.
- SaaS subscription licensing, cloud enabled.
- Launched in Dec 2017, FY18 rollout to Australia, the EU, NZ, Singapore, South Africa and the UK. Next phase the US, Canada, Mexico, Taiwan, Italy, Brazil, Germany, then ROW.



# Innovation pipeline – Global Event Based Tracking & Automation

*Global data set, powerful, unique global tracking engine*

**Powerful global tracking for vessel and container**

**+ Custom-built global data set – ‘one source of truth’**

**+ WTC proprietary advanced analytics and workflow automations**

**+ Embedded in CargoWise One and will integrate with acquired rates engines**

**Immediate customer base from CargoWise One global platform**

**Vessel and container – adopted by DHL GF, Geodis, Rohlig & many others**

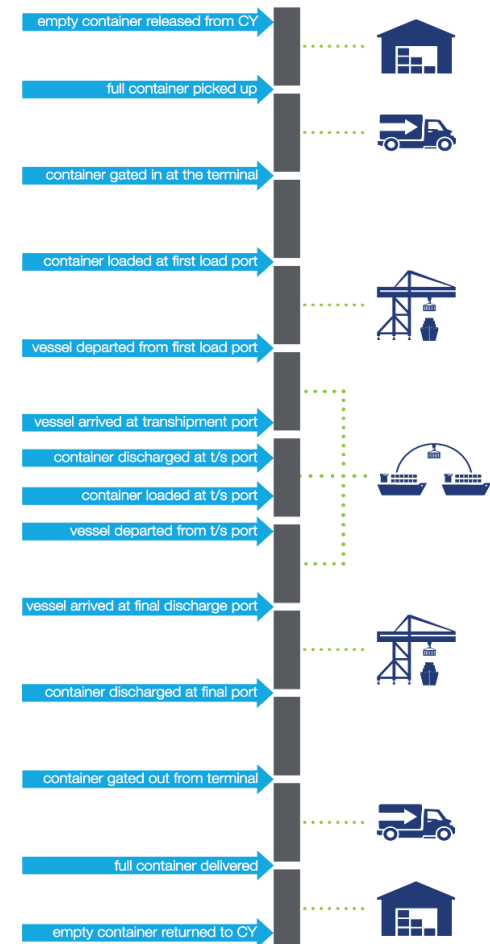
**Each month, tracking more than 350,000 unique containers (~500,000 TEUs)**

## What's in the box:

- Large global set, cleansed, validated and designed to provide real-time visibility of every ocean container, booking, schedules and master bills from 90% of industry volume.
- Provides multi-piece consignment solution, multi-modal route optimisation and allows automations for logistics executions.
- Reduces headcount, penalties, delays, missed shipments, detention, risks.
- Available to all parties to the consignment: alerts to staff, customers, agents and third parties and to trigger downstream transactions.
- Embedded in Freight Forwarding and Customs designed to link to rates, bookings, warehousing and broader CW1 platform.
- Container tracking also provides critical timely and accurate updates on 30 different statuses: eg shipments, government, customs, quarantine, cargo pick-ups, consignee receipts and cargo loading.
- In development, Enhanced Air Tracking (flight and AWB) targeting every flight tracked, real-time movements, status updates. Complexity arises from volumes and fragmentation with over ~36m commercial flights occurring globally annually (IATA 2017).

## Development:

- Available integrated with CargoWise One.
- SaaS transaction licensing for tracking, schedules in STL seat charge
- Cloud enabled.
- Launched vessel and container with further phased rollouts in FY18.
- Enhanced AWB tracking to be launched FY19.
- Currently WTC receives over 12m air freight status updates annually.





# Powerful high growth engine – CargoWise One integrated global platform

*Strong foundation for future technology, seamless rollout, scalable capacity, global solutions*

## CargoWise One



- ✓ scalable to any size of business
- ✓ global reach – 130 countries
- ✓ deeply integrated with real time visibility
- ✓ reduces risks, costs and data entry
- ✓ detailed compliance
- ✓ 30 languages
- ✓ data entered only once
- ✓ automations and delegations
- ✓ built-in productivity tools
- ✓ on-demand/transaction-based licensing
- ✓ global data sets and execution engines
- ✓ swift on-boarding, efficient sales process
- ✓ open-access
- ✓ available anywhere, anytime

Relentless platform expansion with over 500 enhancements annually

WiseTech  
GLOBAL